

# MONTHLY MEMBERSHIP PROGRESS REPORT

LOCATION TEXAS

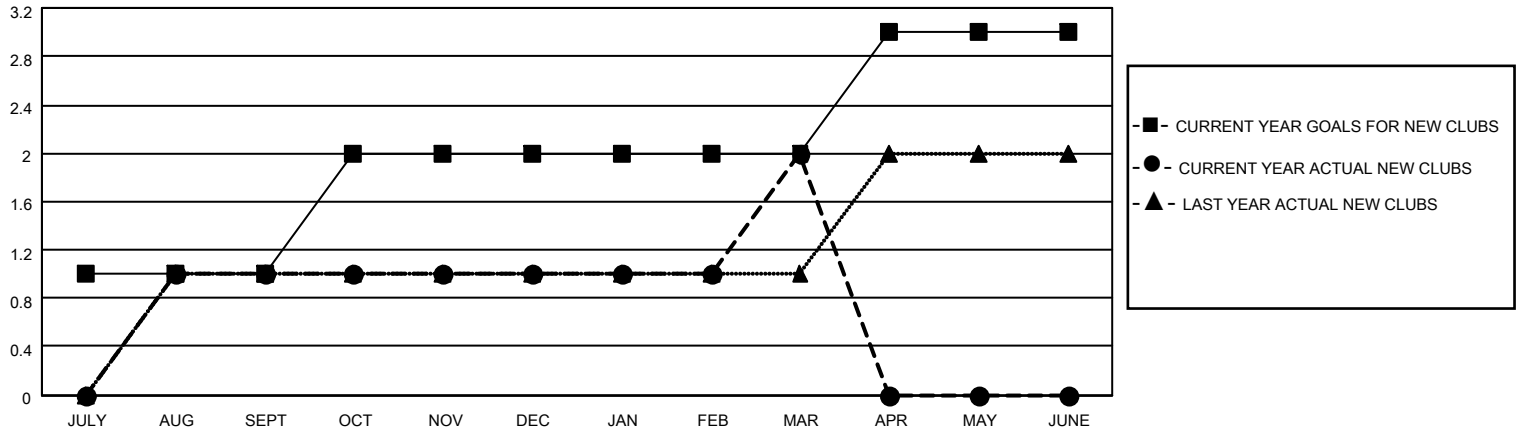
District 2 X1

Results as of: 3/31/2023

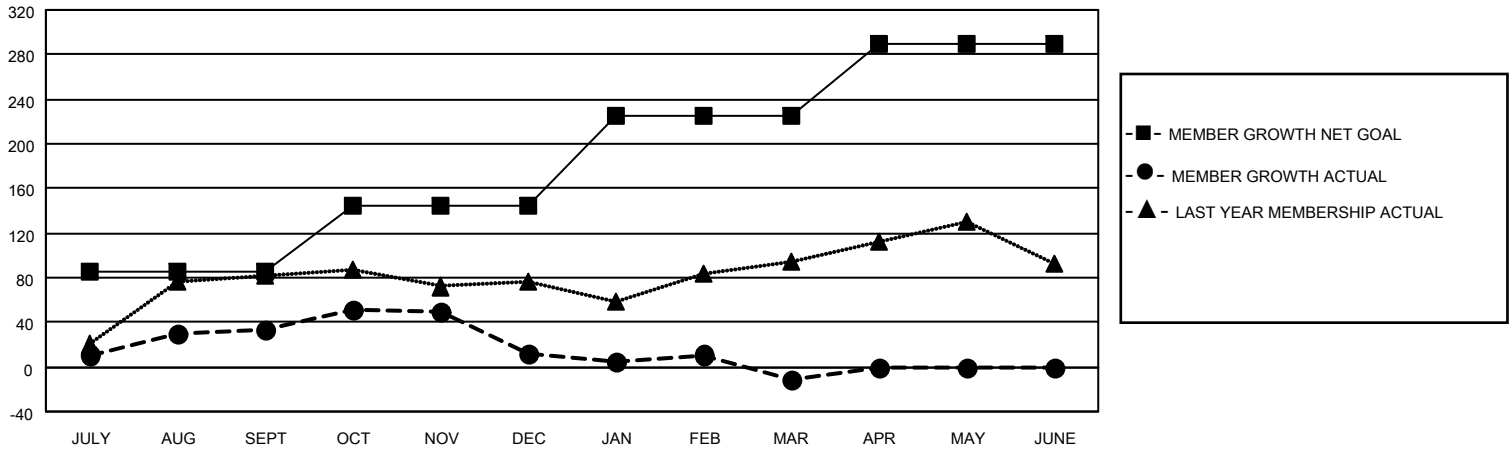
Clubs			
RESULTS FOR 2022-2023			
QUARTER	NEW CLUB GOAL	NEW CLUBS	DROPPED CLUBS
JULY/AUG/SEPT	1	1	0
OCT/NOV/DEC	1	0	1
JAN/FEB/MAR	0	1	0
APR/MAY/JUNE	1	0	0

Members			
RESULTS FOR 2022-2023			
QUARTER	MEMBER GROWTH NET GOAL	MEMBER GROWTH ACTUAL	DROPPED MEMBERS ACTUAL (including transfers)
JULY/AUG/SEPT	85	118	75
OCT/NOV/DEC	60	84	93
JAN/FEB/MAR	80	86	93
APR/MAY/JUNE	65	0	0

**GOALS AND ACTUAL NEW CLUBS CUMULATIVE**



**GOALS AND ACTUAL MEMBERS CUMULATIVE**



**DROPPED CLUBS: 1**

**44 CLUBS OF 62 ADDED 1 OR MORE NEW MEMBERS**

**GENDER DISTRIBUTION**

MALE	1,124 (61.15%)
FEMALE	713 (38.79%)
NON BINARY	1 (0.05%)
PREFER NOT TO ANSWER	0 (0.00%)

**DROPPED MEMBERS**

[CLICK HERE FOR CUMULATIVE MEMBERSHIP DATA](#)

DECEASED	20
CLUB CANCELLED	0
OTHER	241
<b>TOTAL</b>	<b>261</b>

TOTAL FAMILY UNIT MEMBERS	291
FAMILY MEMBERS PAYING HALF DUES	150